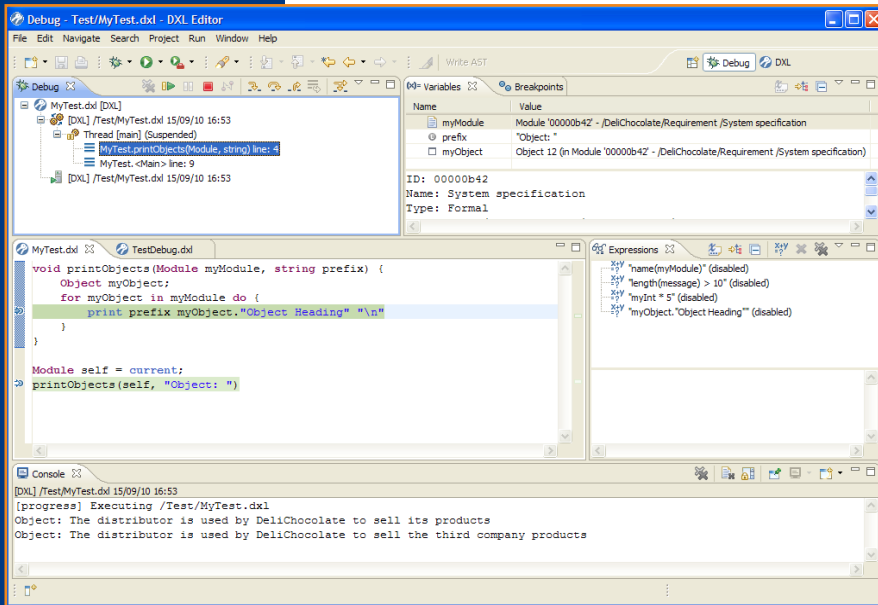




DXL Editor

for IBM Rational DOORS



IBM Rational DOORS® is a well established platform for engineers, allowing them to manage their project requirements in a flexible environment. DOORS data is manipulated with a dedicated language, DXL (the DOORS eXtension Language).

To overcome the limitations of the DOORS native editor, SODIUS has developed the DXL Editor, offering unmatched features to facilitate developers' lives.

Going far beyond syntax highlighting, the DXL Editor is a real development environment for DXL built on the market-leading Eclipse platform, bringing its richness and power to provide a first-class environment for editing, executing and debugging your DXL scripts, on par with other well known languages such as Java and C++.

Ready for

 software



There are two different licenses available for the DXL Editor, depending on your needs:

The **Free License** provides all the basic features for editing, browsing, compiling and running the code, and is perfectly suited for simple DXL programming tasks.

The **Pro License** provides additional debug features and is especially suited for complex DXL programs.

When improving efficiency and reducing your development time are the critical factors, the Pro License is the right choice!



SAVE TIME!

Features	Free License	Pro License
Editing <ul style="list-style-type: none"> Syntax highlight Mark Occurrences Content Assist Text Hover 	<ul style="list-style-type: none"> ■ ■ ■ ■ 	<ul style="list-style-type: none"> ■ ■ ■ ■
Browsing <ul style="list-style-type: none"> Outline Project Explorer 	<ul style="list-style-type: none"> ■ ■ 	<ul style="list-style-type: none"> ■ ■
Compilation <ul style="list-style-type: none"> Compilation Problems View 	<ul style="list-style-type: none"> ■ ■ 	<ul style="list-style-type: none"> ■ ■
Execution <ul style="list-style-type: none"> Run Console 	<ul style="list-style-type: none"> ■ ■ 	<ul style="list-style-type: none"> ■ ■
Debug <ul style="list-style-type: none"> Breakpoints Insertion Step-by-step Debug Variable Inspection Expression Evaluation 		<ul style="list-style-type: none"> ■ ■ ■ ■
DOORS DXL Reference Manual		■



Get more information and check out our offers online at: www.dxleditor.com

Editing Features

Syntax Highlight

Keywords, strings, comments and function calls are highlighted.

Mark Occurrences

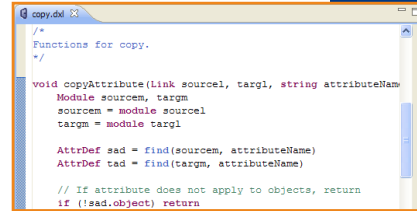
Mark Occurrences dynamically highlights the occurrences of the word currently selected in the editor.

Content Assist

Content Assist provides a list of suggested completions for partially entered strings. Templates are shown together with the Content Assist proposals. There are existing templates, such as 'for', 'if' and more, but you can also define new templates.

Text Hover

When the mouse is over a DXL function call, a tooltip displays the function signature and its associated comment, if any.

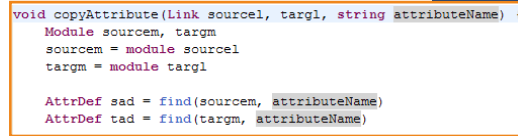


```
/*
 * Functions for copy.
 */

void copyAttribute(link source1, targ1, string attributeName
Module sourcecm, targm
sourcecm = module source1
targm = module targ1

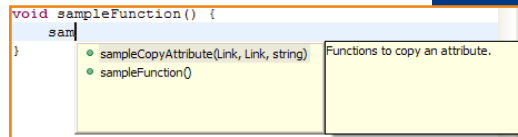
AttrDef sad = find(sourcecm, attributeName)
AttrDef tad = find(targm, attributeName)

// If attribute does not apply to objects, return
if (!sad.object) return
```



```
void copyAttribute(Link source1, targ1, string attributeName) {
Module sourcecm, targm
sourcecm = module source1
targm = module targ1

AttrDef sad = find(sourcecm, attributeName)
AttrDef tad = find(targm, attributeName)
```

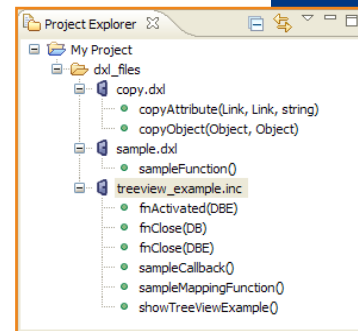
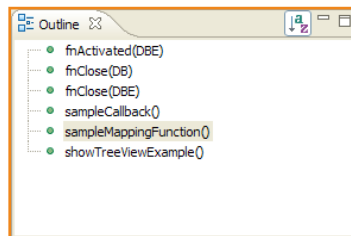


```
void sampleFunction() {
sam
}
• sampleCopyAttribute(Link, Link, string) Functions to copy an attribute.
• sampleFunction()
```

Browsing Features

Outline

The Outline View displays the structure of the DXL file, listing the functions declared within it, and automatically refreshing as you edit the file. Clicking a function in this view causes the editor to jump to the function's declaration.



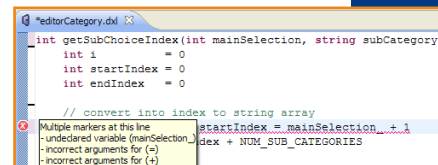
Project Explorer

The Project Explorer lets you organize a consistent set of DXL files into projects. DXL Functions are displayed in the project's view, without the need to open the corresponding DXL file in an editor, enabling you to quickly navigate into your project contents.

Compilation Features

Compilation

Each time a DXL file is modified and saved, the DXL compiler is automatically executed on that file. For each error, an annotation is added in the editor sidebar, with a tooltip showing the error message, and the corresponding line is underlined.

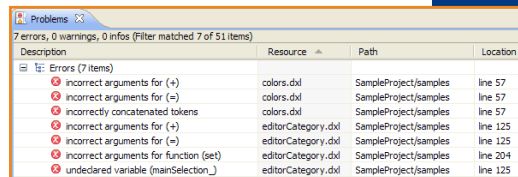


```
int getSubChoiceIndex(int mainSelection, string subCategory)
int i = 0
int startIndex = 0
int endIndex = 0

// convert into index to string array
Multiple markers at this line
- undeclared variable (mainSelection_) index + NUM_SUB_CATEGORIES
- incorrect arguments for (=)
- incorrect arguments for (=)
- incorrect arguments for (=)
```

Problems View

Navigation through DXL errors for a particular file, a project or the entire workspace is done using the Problems view.

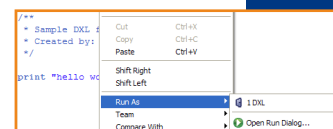


Description	Resource	Path	Location
incorrect arguments for (+)	colors.dxl	SampleProject/samples	line 57
incorrect arguments for (=)	colors.dxl	SampleProject/samples	line 57
incorrectly concatenated tokens	colors.dxl	SampleProject/samples	line 57
incorrect arguments for (+)	editorCategory.dxl	SampleProject/samples	line 125
incorrect arguments for (=)	editorCategory.dxl	SampleProject/samples	line 125
incorrect arguments for function (set)	editorCategory.dxl	SampleProject/samples	line 204
undeclared variable (mainSelection_)	editorCategory.dxl	SampleProject/samples	line 125

Execution Features

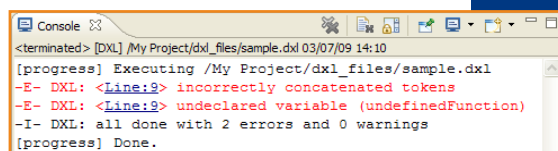
Run

A DXL file can be executed directly from Eclipse.



Console

A console is opened when a DXL file is executed. This console logs any DXL text output, and indicates any DXL windows that may be opened by the executed file. Execution errors are displayed in the console and hyperlinks are available on line numbers to jump to the corresponding location in the DXL editor.



```
<terminated> [DXL] /My Project/dxl_files/sample.dxl 03/07/09 14:10
[progress] Executing /My Project/dxl_files/sample.dxl
-E- DXL: <Line:9> incorrectly concatenated tokens
-E- DXL: <Line:9> undeclared variable (undefinedFunction)
-I- DXL: all done with 2 errors and 0 warnings
[progress] Done.
```

Debug Features (Pro License only)

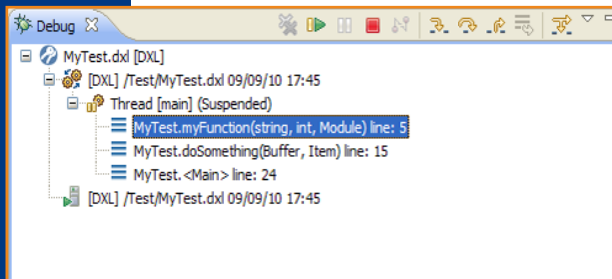
Debugging is a critical activity when developing any source code. Getting the right tool to facilitate this is an important asset for developers needing to manage long and complex programs, as well as occasional programmers needing to quickly become productive in a new context.



Debug features will dramatically speed up the coding process and result in higher quality results. The DXL Editor Pro License unlocks the magic and helps you finalize your projects faster than ever!

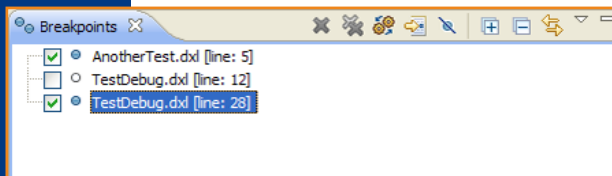
With a user-friendly graphical interface, the DXL Editor allows you to get full control over the code execution. You will be able to:

- Add breakpoints in your program,
- Control execution with stop, resume, and step-by-step execution,
- Inspect variables,
- Inspect data.



Debug View

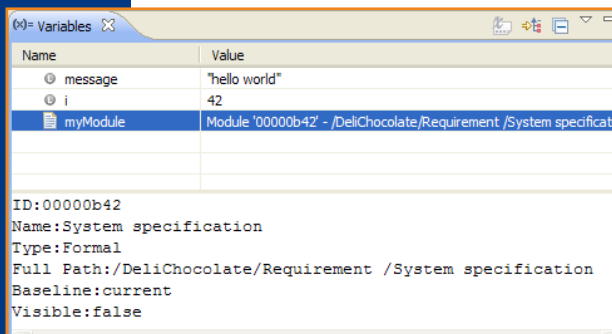
The Debug View is the primary view to manage the debugging of a program. This view displays the stack frame for the suspended DXL execution you are debugging, showing the list of function calls.



Breakpoints View

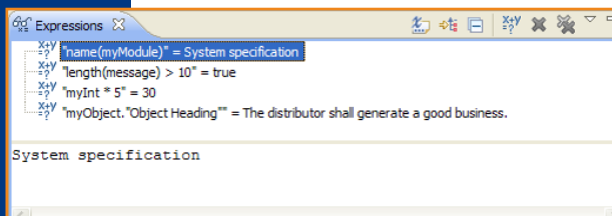
The Breakpoints View lists all the breakpoints you currently have set in your workspace.

You can double-click a breakpoint to display its location in the editor (if applicable). You can also enable or disable breakpoints, delete them, add new ones, and group them by working set.



Variables View

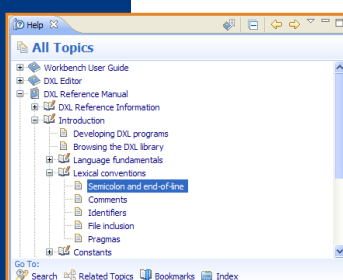
The Variables View displays information about the variables associated with the selected function in the Debug View. Selecting a variable will display more detailed information in the Detail Pane.



Expressions View

The Expressions View allows you to dynamically execute queries to assist your debugging. You can enter any valid code and have the results calculated at every execution step to monitor values. Entries in the Expressions View can be selected to have more detailed information displayed in the Detail Pane.

Debug features embed technology from IT-QBase.
www.it-qbase.de



DXL Reference Manual (Pro License only)

The DOORS DXL Reference Manual is added to the Eclipse Help View, allowing you to browse the DXL help information alongside your code. You can also copy and paste directly from the help files to speed up your coding.

Note: Please refer to online documentation for full description of features and known limitations.

Support

A dedicated technical forum is available online, allowing all DXL Editor users to share experience and get their questions answered by the community or SODIUS staff.

In addition, the SODIUS technical team is available at support@sodius.com to help customers.

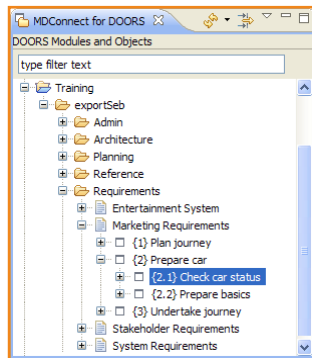
Training

SODIUS offers specific training to help DXL developers getting started on the Eclipse platform.

This training provides a good understanding of the Eclipse development environment, exposing all of resources available and helping you adopt the best practices. This will significantly improve your effectiveness while you work with DXL Editor.

To learn more on our training offer, please visit our web site.

Other DOORS-related products from SODIUS

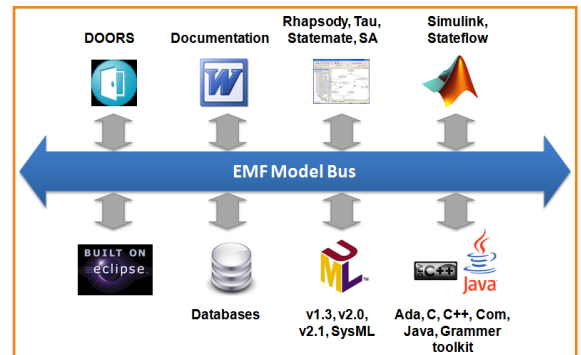


MDConnect for DOORS

MDConnect for DOORS provides DOORS database navigation in an Eclipse environment and is available for free. Furthermore the RSA Extension interconnects DOORS and Rational Software Architect, facilitating the setup and maintenance of links between requirements and models. Other Extensions will follow, targeting major applications that are used together with DOORS in systems development.

MDWorkbench for DOORS

MDWorkbench for DOORS is a version of SODIUS's framework dedicated to DOORS. This add-on to DOORS brings advanced functionality that helps to architect DOORS databases, to reverse engineer DOORS schemas, to generate documents and to exchange any DOORS information with other environments.



Compatible Software

DOORS® 8.x and 9.x.

The DXL Editor is expected to run locally on the same machine where DOORS is running.

System Requirements

Microsoft® Windows®

SODIUS Contacts

Paris (Headquarters)
SODIUS SAS
1, Rue André Gide
75015 Paris
France
Phone: +33 (0) 1 43 21 16 12

Nantes (Corporate R&D)
SODIUS SAS
2 impasse Joseph Marie Fourage
44300 Nantes
France
Phone: +33 (0) 2 28 23 60 60
Fax: +33 (0) 2 28 23 60 57

United States (Offices)
SODIUS Corp.
60 Broad St. - Suite 3502
New York, NY 10004
USA
Phone: +1 (917) 727-3020
Fax: +1 (917) 210-4208

www.dxleditor.com
contact@sodius.com